



**IKEBANA
ENGINEERING LTD.**

Heat shrinkable cable accessories

Heat Shrinkable Conductive End Caps



Product Features

FOR PROTECTING THE UNUSED CABLE END IN THE VICINITY OF LIVE CABLES.

Conductive end caps are used for protecting the unused cable end where there are live cables in the close vicinity of this cable. The live cables nearby create an electric field and induce a potential in the unused cable. The conductive end cap neutralizes this potential induced in the unused cable. Conductive end caps also protect the cable end from the environmental effects like the normal end caps.

- **EXCELLENT HEAT RESISTANCE:** Made from semi-conductive cross linked polyolefins, non-melting
- **HIGH FLEXIBILITY:** Conductive end caps have good shrinking properties which ensure easy installation.
- **LARGER APPLICATION RANGE:** Higher expansion ratio to accommodate multiple cable sizes.
- **EASY INSTALLATION:** In the factory or at site using gas torch or hot blower.

Properties

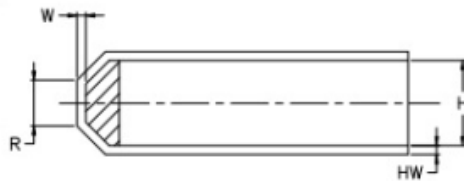
	Test Method	Typical Data
Tensile Strength	ASTM D 638	Min. 12MPa
Ultimate Elongation	ASTM D 638	Min. 300%
Hardness	ASTM D 2240	Min. 38 Shore D
Accelerated ageing:7 days at 120 deg C		
Tensile Strength	ASTM D 2671	Min 10MPa
Ultimate Elongation	ASTM D 2671	Min. 250%
Volume Resistivity	IEC 60093	Max.2 x 10 ⁴ Ω.cm
Water Absorption	ISO 62	Max. 0.5%



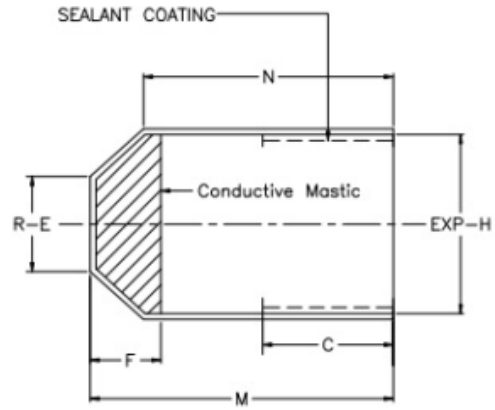
**IKEBANA
ENGINEERING LTD.**

Heat shrinkable cable accessories

Dimensions and Ordering information



RECOVERED CONDUCTIVE END CAP



EXPANDED CONDUCTIVE END CAP

Conductive End Cap Design

MODEL	H	EXP-H	M	N	C	R	R-E	W	HW	F
EC CON	S	E	E	E	E	S	E	S	S	E
IXL100S	3	10	35	32	25	3.1	5	2.1	2.3	5
IXL100	4.5	15	45	40	25	5	5	2.7	2.3	7
IXL105	6	20	63	58	30	7.5	11	2.9	3.1	8
IXL110	8.5	25	70	65	30	8	20	3.2	3	8
IXL120	14.5	40	102	92	40	12	23	3.2	3.2	12
IXL130	24	63	118	105	55	16	25	3.7	3.7	15
IXL135	32	75	120	100	70	16	37	3.7	4.3	25
IXL140	38	78	130	107	70	20	31	4.2	4	25
IXL145	45	106	164	138	80	22	48	4.25	4.5	25
IXL150	57	100	155	133	80	25	48	4.5	4	25
IXL160	57	120	155	133	80	25	48	4.5	4	25
IXL170	57	145	155	133	80	25	46	4.75	5	25

E : DIMENSION WHEN EXPANDED

S : DIMENSION WHEN FULLY RECOVERED

NOTES

1. ALL DIMENSIONS ARE IN MM.

2. TOLERANCES :

THICKNESS W,HW & T ±10%

LENGTHS M,N,C ± 2%

DIAMETERS H,EXP-H,R-E ± 3%

ANGLES D + 5,-0